

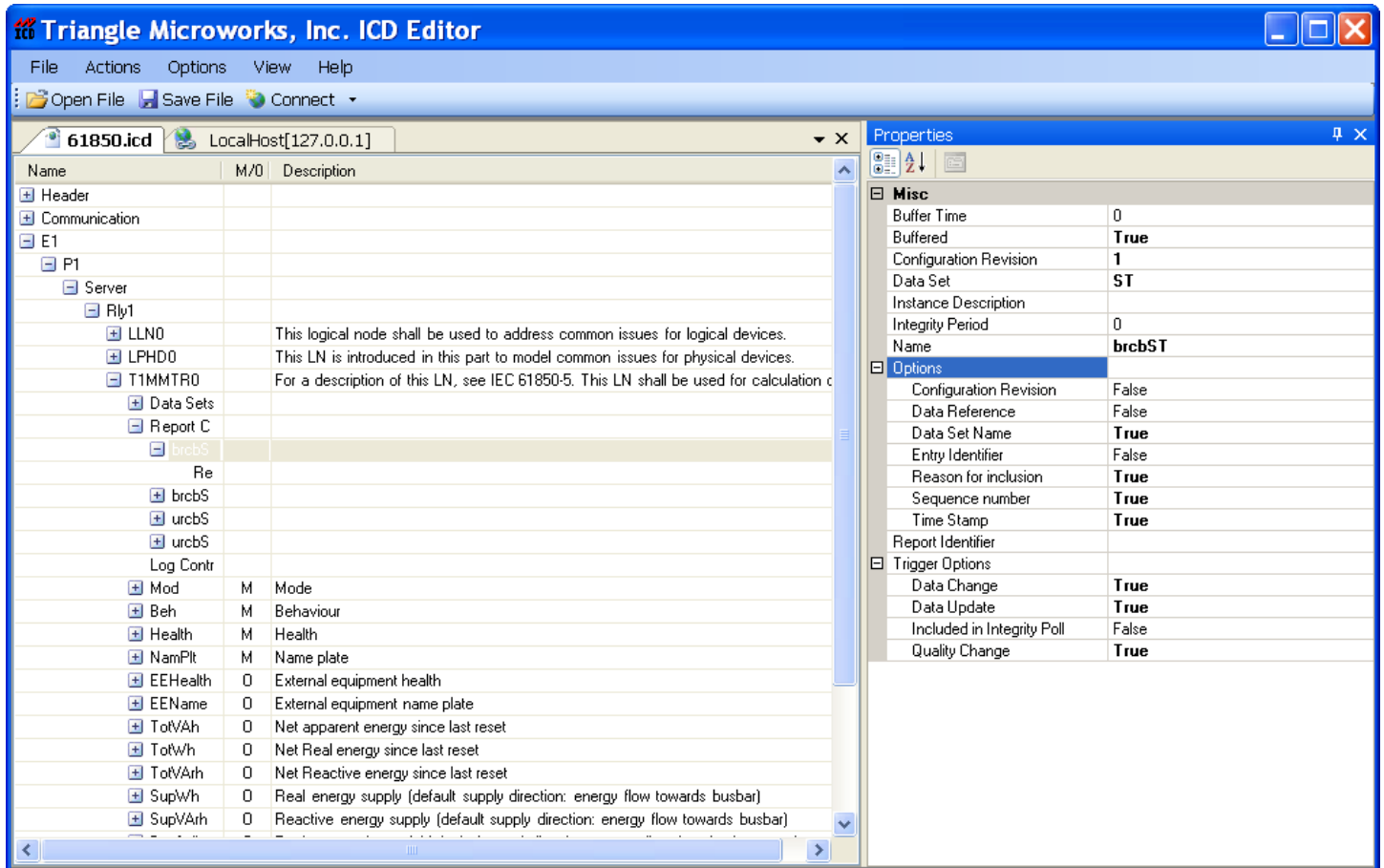


ICD Editor

The IED Capability Description (ICD) Editor simplifies the creation and editing of Substation Configuration Language (SCL) files, DNP3 XML Device Profiles, and IEC 60870-5 private mapping fields within an ICD file. The ICD Editor is designed to hide the complicated details of schema files and present the information as a coherent Object Model making it unnecessary to learn XML schemas. Optional modules are available that provide an IEC 61850 Server and/or Client which makes it possible to create a model, simulate that model with the Server, then browse it using the Client with a few simple mouse clicks.

HIGHLIGHTS

- ▲ Simplifies creation and editing of SCL files (including IEC 60870-5 private fields) and DNP3 Device Profiles
- ▲ Instantly validate SCL files and DNP3 Device Profiles and against the corresponding schemas
- ▲ Complete Object Model specification for IEC 61850, IEC 61400-25 (Wind), and DER
- ▲ Quickly compare Object Model to corresponding specification and add missing parts
- ▲ Create/Edit point mappings from DNP3 or IEC 60870-5-101/104 to IEC 61850 Object Model
- ▲ Optional IEC 61850 Test Server allows instant emulation of edited SCL file
- ▲ Optional IEC 61850 Client can save discovered model to an SCL file and compare against other SCL files or compare it directly to the specification



Triangle MicroWorks is an active member in IEC Technical Committee 57, the OPC Foundation, the DNP3 Users Group (serving on both the Technical and Executive Committees), and the Modbus Organization. Our communication protocol expertise will provide you with the highest quality software and technical support possible.

IEC 61850 WEB-BASED TRAINING

The Triangle MicroWorks IEC 61850 web-based training course can provide additional background knowledge for your team to more fully utilize the ICD Editor. This course provides a cost-effective means for your entire team to develop a solid understanding of the fundamentals IEC 61850. The interactive video provides a complete overview of IEC 61850, including how the Substation Configuration Language (SCL) is used to configure a device using ICD files and how the ICD Editor can help you quickly model your device in SCL.

HARDWARE

The ICD Editor uses Ethernet ports on a PC running Windows™ 2003 Server, 2000 SP3, XP SP2 (or later), or Vista operating systems.

PRICING

The base price of the ICD Editor is \$2500 USD per single user license (tied to a single PC or a removable USB drive). This price includes the first year of the Maintenance & Enhancement Plan. An IEC 61850 Test Server option is available for an additional \$2500 USD. An IEC 61850 Client option is available for an additional \$2500 USD. The ability to create and edit DNP3 XML Device Profiles is a free component of the ICD Editor.

A single (PC or USB-based) License to the ICD Editor along with the optional IEC 61850 Test Server and IEC 61850 Client is included at no charge with the purchase of a IEC 61850 Source Code Library.

*Substantial discounts are available for volume purchases. Contact Triangle MicroWorks to obtain a quote or visit our website www.TriangleMicroWorks.com/downloads.htm to download a full **21-day evaluation** version of the product.*

SUPPORT AND UPGRADES

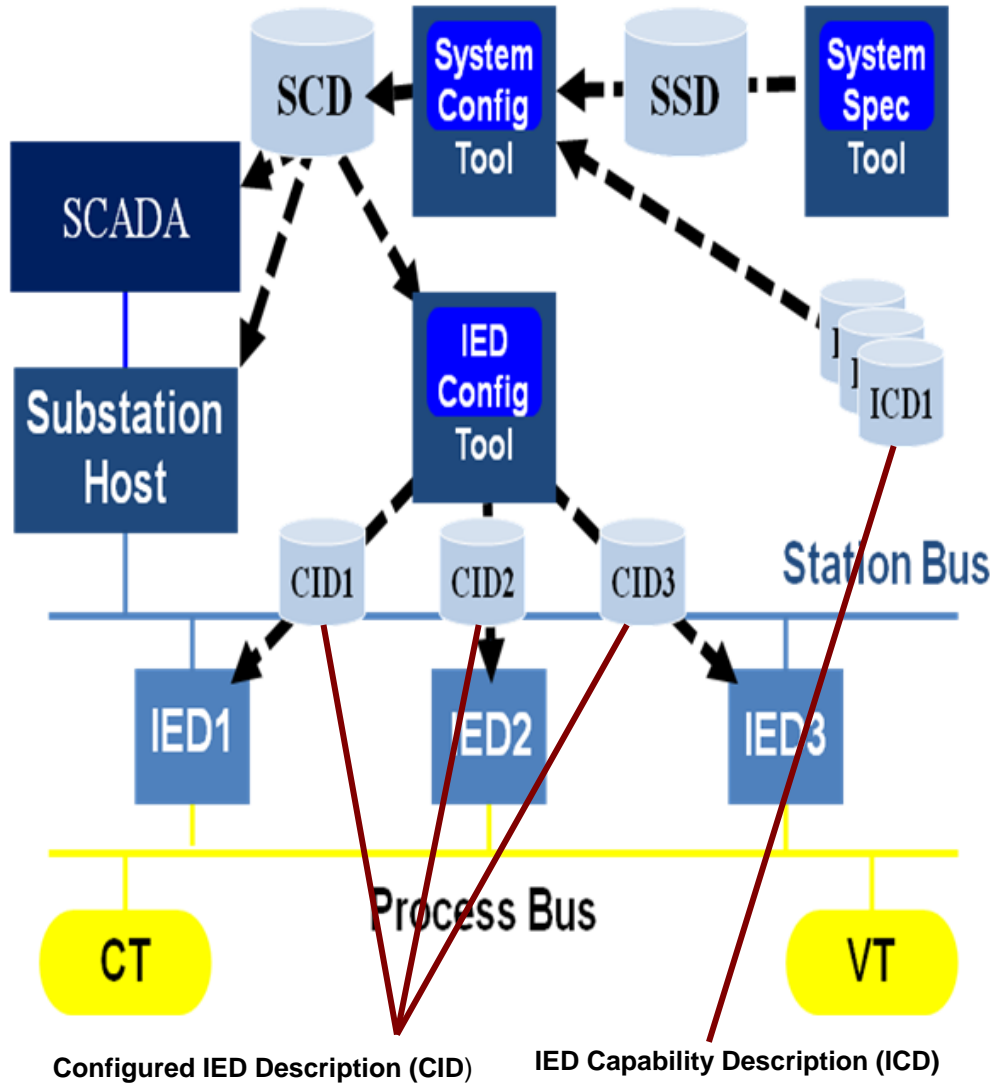
The Maintenance & Enhancement Plan provides a cost effective method for upgrading to new versions of the ICD Editor as they are released. It also provides technical support by telephone, fax, or email. The first year of the Maintenance & Enhancement Plan is free. Future years may be purchased in advance at a 25% discount.

The renewal price after the first year is 25% of the total purchase price. For example, the Maintenance Plan for the ICD Editor with the optional IEC 61850 Test Server would be \$1250 USD per year.

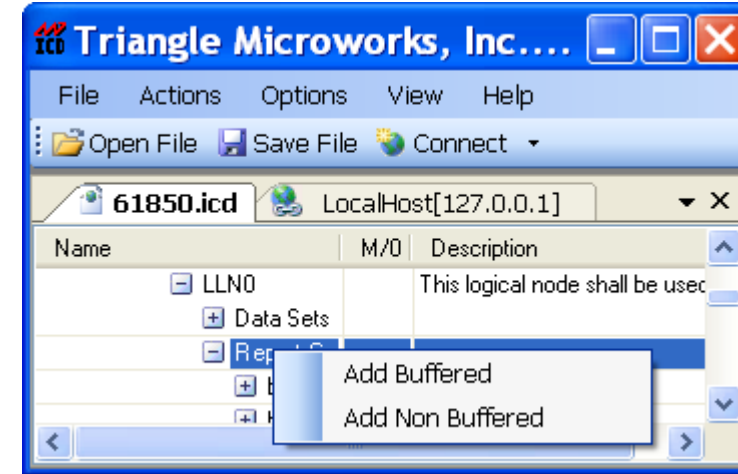
Triangle MicroWorks offers cost-effective Web-Based Communication Protocol Training for \$500 USD per protocol which includes 120-day access for your entire site. A 20% discount is provided when purchased in combination with the Communication Protocol Test Harness or ICD Editor with Optional IEC 61850 Test Server and Optional IEC 61850 Client.

ICD Editor Features and Use Cases

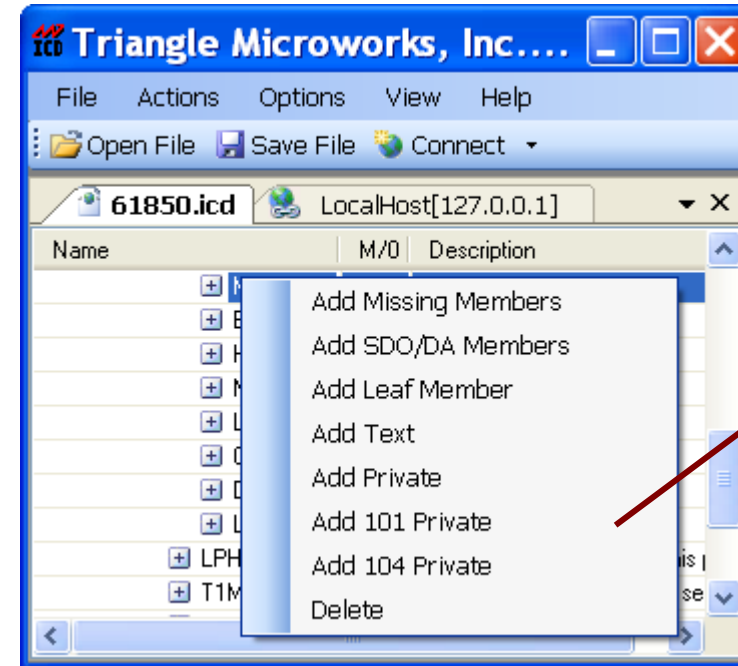
Typical Use of the ICD Editor in a Substation



Intelligent Model Building. Context sensitive menus on each item ensure correct models will be constructed.

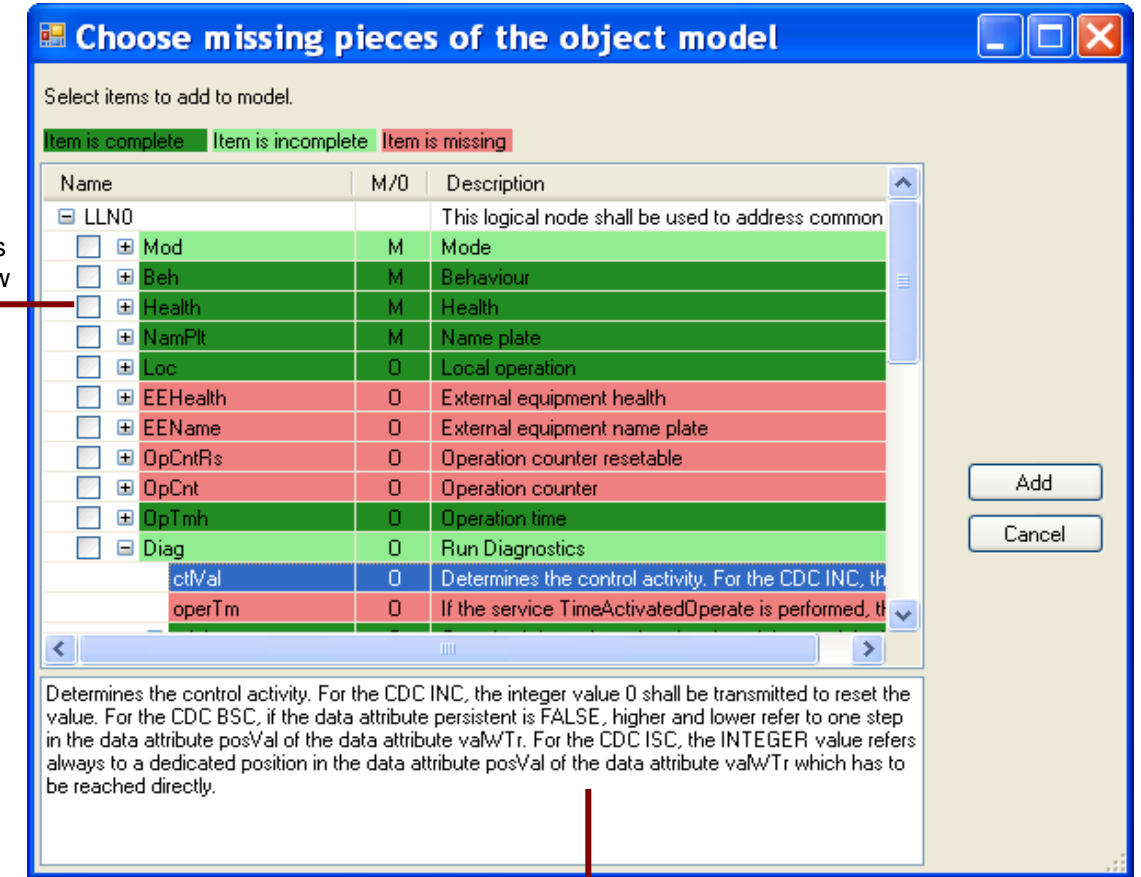


Model Display. Color coded parts of the model allow for easy identification of missing parts.



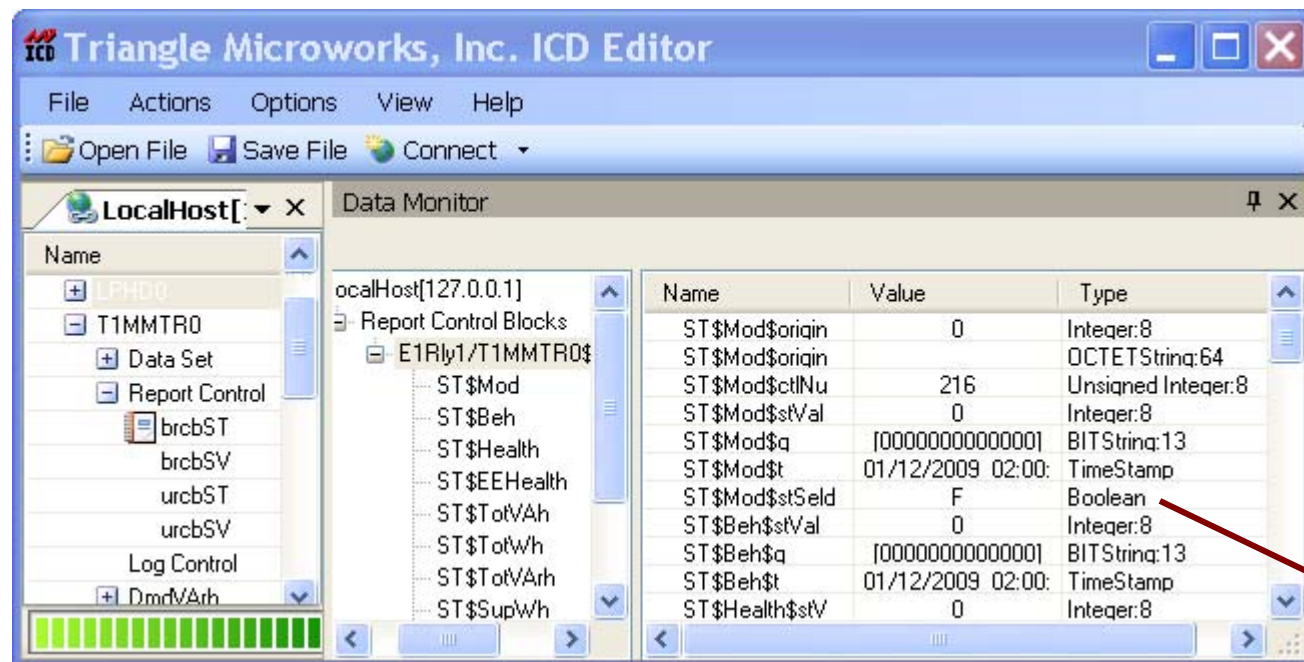
Add/Edit Private and Text field. Including the IEC 60870-5-101 and IEC 60870-5-104 private field mappings.

Compare/Add missing parts of Model. Easily identify and add missing parts of the model according to the IEC 61850-6 specification.



Specification Information at your fingertips. Quickly identify which parts of the model are mandatory or optional. See the description of the model item directly from the specification.

Built-in IEC 61850 Test Client. Quickly connect to an IEC 61850 server and monitor data changes from Report/GOOSE Control Blocks or polled data.



Built in Server Testing. Automatically generate messages for:

- GOOSE Control Blocks
- Report Control Blocks
- Log Control Blocks

Monitor data in real time.

Built in IEC 61850 Test Server. Allows immediate communication with a simulated device using the model created in the ICD Editor. A customizable simulation file is automatically generated from the current model and used by the IEC 61850 Test Server to emulate generic data changes in the simulated device.

